



St Brelade's Bay Hotel
HEALTH CLUB & SPA

STEAK NIGHT MENU

STEAK MENU



8oz Entrecote	£26	
8oz Ribeye	£31	(£5.00 Supplement)
8oz Beef Fillet	£35	(£8.00 Supplement)
18oz T-Bone	£48	(£21.00 Supplement)
8oz A5 Wagyu	£76	(£49.00 Supplement)
1kg Tomahawk (for 2)	£62	(£8.00 Supplement)

SAUCES

Garlic Butter

(7)

Argentinian Chimichurri

(14 Red Wine Vinegar)

Green Peppercorn

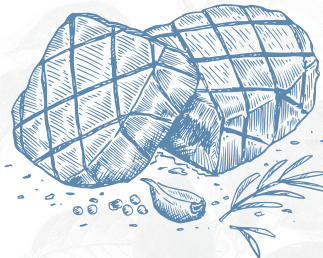
(Mc 1,2 Wheat,7, Mc 13,14 Red Wine)

Red Onion & Wholegrain Mustard

(Mc 1,2 Wheat,9, Mc 13,14 Red Wine)

All of our steaks are served with a Flat Field Mushroom, Roasted Vine Tomatoes, French Fries and your choice of sauce.

Please note that the Wagyu and Tomahawk need to be pre-ordered a minimum of 48 hours in advance.



Please note there is a 10% service charge on all food and drinks for both residents and non-residents.

Allergens

1 Celery	2 Cereals containing gluten	3 Crustaceans	4 Eggs	5 Fish	6 Lupin	7 Milk
8 Molluscs	9 Mustard	10 Nuts	11 Peanuts	12 Sesame seeds	13 Soya	14 Sulphur Dioxide

All ingredients may not be listed for this menu, should you need more information about allergens, please ask a member of our front of house team.